

## Garden of light

Michael Fischer-Art, the rebel of the German art scene and the representative of the „New Leipzig School“ is known for calling a spade a spade and he does not fool about with criticism.

His latest exhibition “Garden of light” confirms his reputation. The artist reminds us of topicals and global disasters endangering our earth, based on mankind itself. His paintings, full of expressionistic colors show the present situation on earth – manipulated and clarified, still everything seems to be in best order.

Watching from a suitable height the earth still seems to be a flourishing Garden of Eden. Out of a distance cracks and fissures don't appear threatening. However, they exist and were explicitly illustrated by the artist.

Nevertheless, the viewer should not allow himself to be mystified by the beauty of the colours and the drawing's composition. Appearances are deceiving and don't express reality. Only the specific look into details will evidence the dimension of the earth's beginning destruction. The image of reality disillusion and indicates the vulnerability of our environment.

Michael Fischer-Art is warning us and suggests to necessarily treat our earth with care and respect. He gives us a thought-provoking impulse and an advice for the following generations: maintain our earth as a unique treasure. Only in this way we can feel confident, that in the future we will be still able to walk on this planet with joy and delight. There is only one earth.

Fischer-Art's latest producing period comes up with a unique relief feed in his paintings. These profiles are created and enhanced by primed acrylic paint on canvas. By doing so an additional charm is caused by the eye-catching colours which are spread out on the entire surface.

The effects of ups and downs are intensified by the playing of contrasts – huge white surfaces in opposite to dazzling multicoloured clusters.

Lights and shadows complement one another in high-contrast scenes developing a luminiscent play of colours.

The Garden of light – drawing which reflect a flourishing landscape.

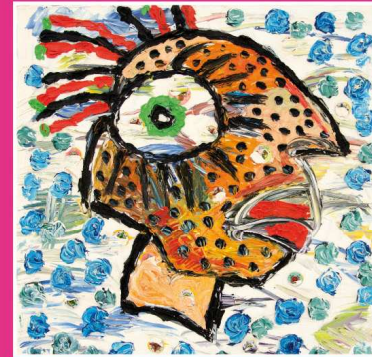
*Introduction by Bodo Peintka, Bookauthor and Art Collector*



'Der Geist', 2010, oil on canvas, 80 x 80 cm



'Gewittersturm', 2010, oil on canvas, 80 x 80 cm



'Der Spieler', 2010, oil on canvas, 80 x 80 cm



'Holland', 2010, oil on canvas, 80 x 80 cm

Galleria Barbara Mahler presents

## Michael Fischer-Art Nature 2

a cura di Bodo Peintka

**Nature 2**  
18.05. - 11.09.2011

lunedì - venerdì  
9.00 - 16.30  
escluso giorni festivi

Galleria Barbara Mahler  
presso  
**UBS**  
Piazzetta della Posta  
CH - 6900 Lugano

info + 41.76.586.05.55  
galleriabmahler@bluewin.ch  
www.galleriabmahler.com



# NATURE